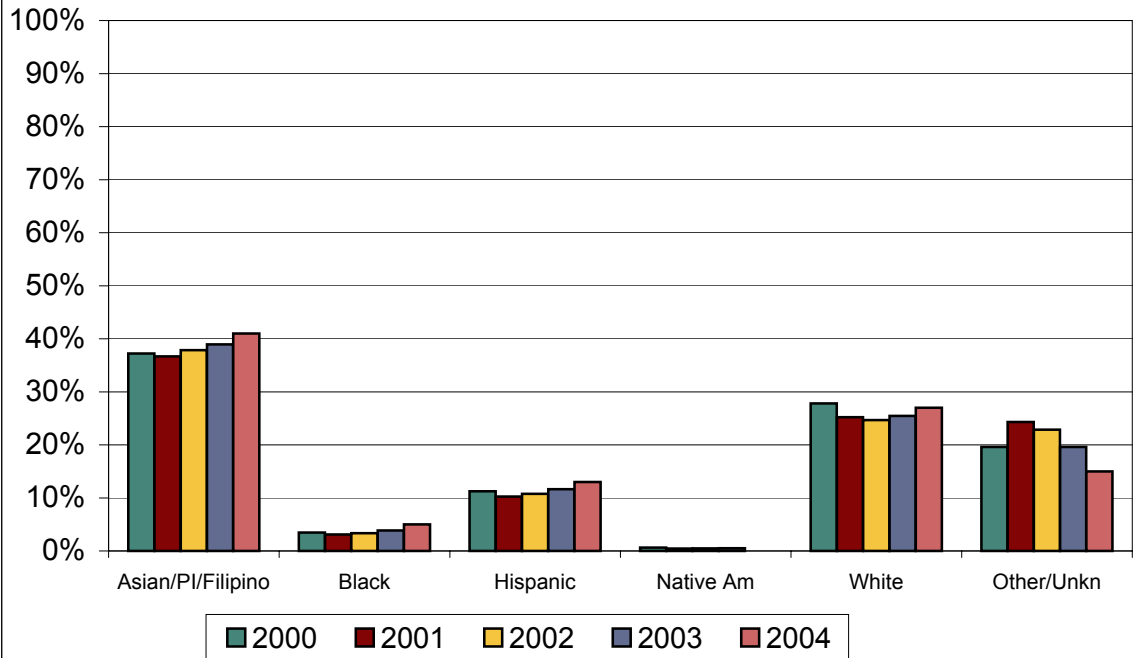
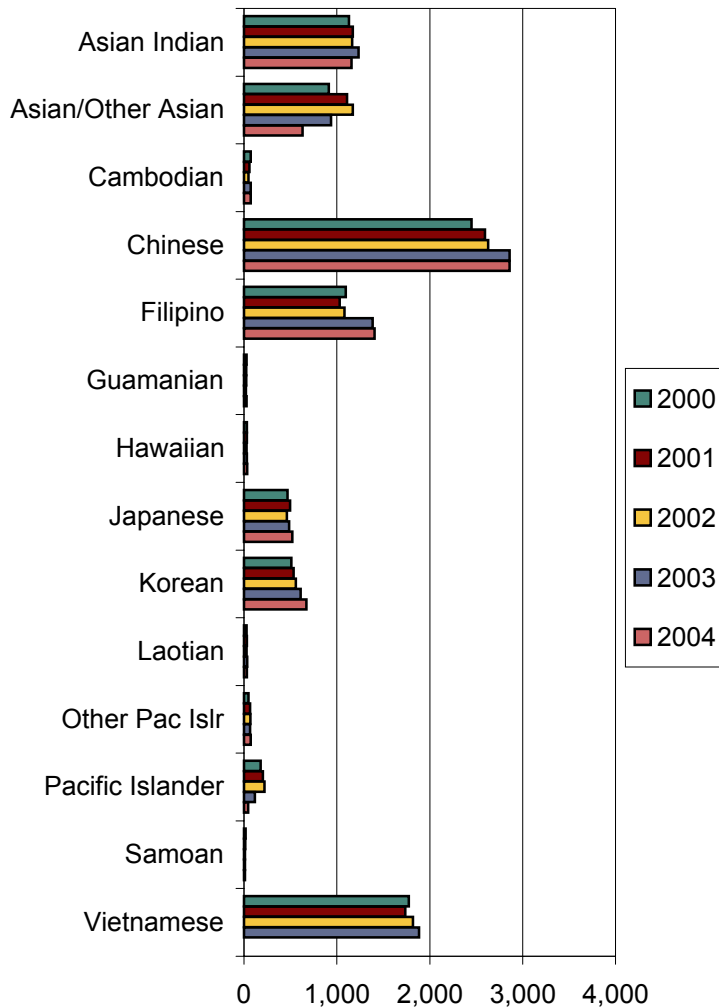


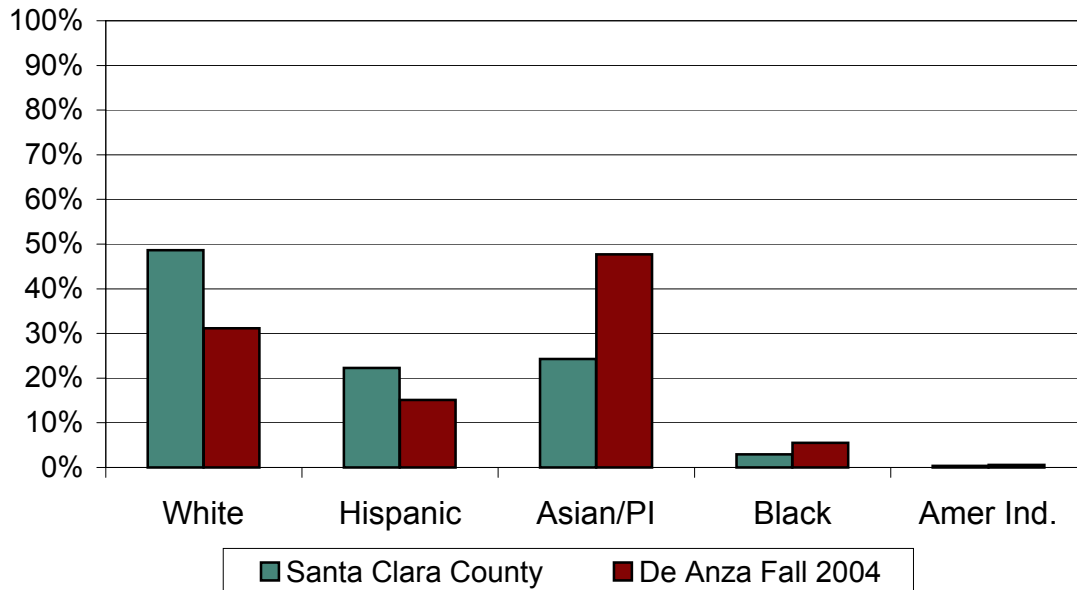
De Anza College Fall Headcount Percentage Distribution by Ethnicity



De Anza College Asian Fall Headcount Distribution

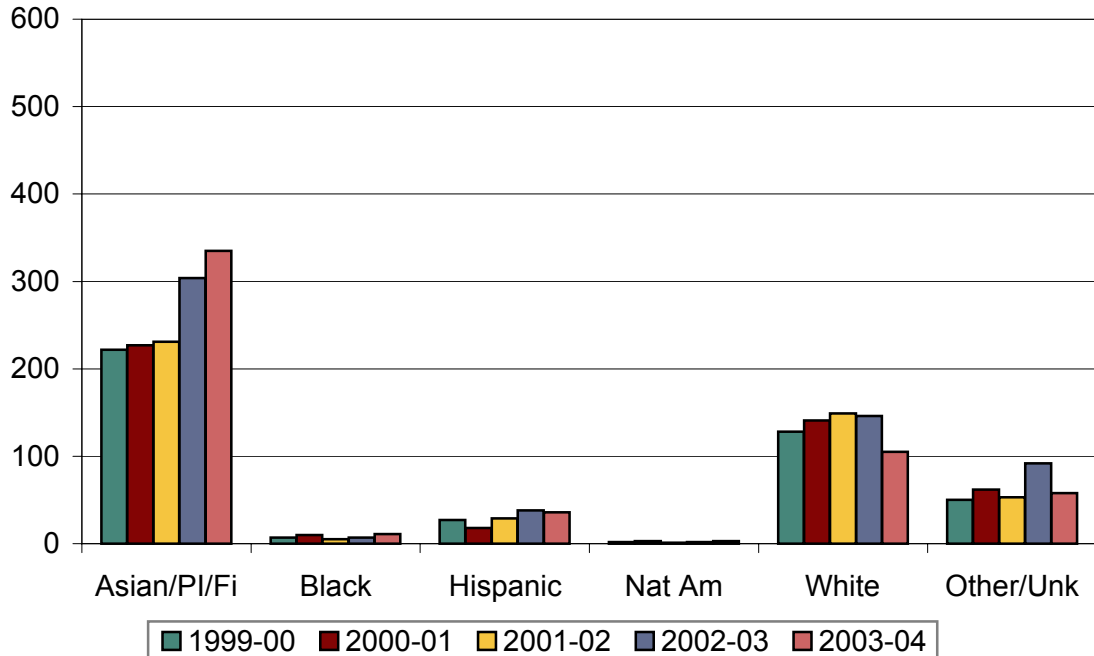


Santa Clara County Adult Population and De Anza College Students by Ethnicity

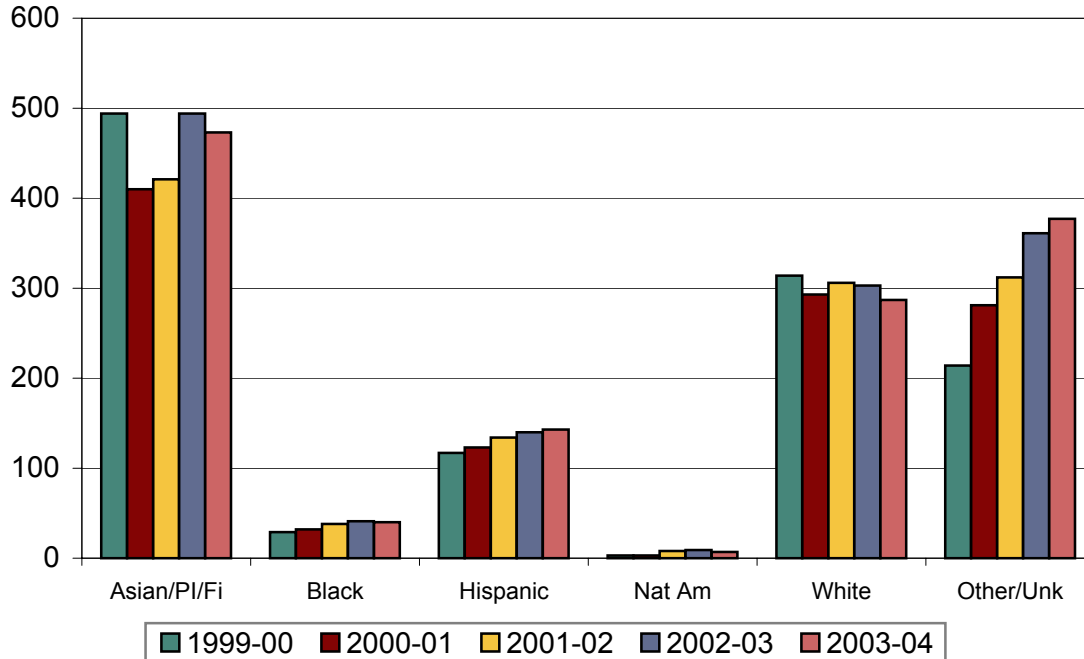


Note: Unknown/Decline to state not included in the De Anza figures to be consistent with Santa Clara County figures.

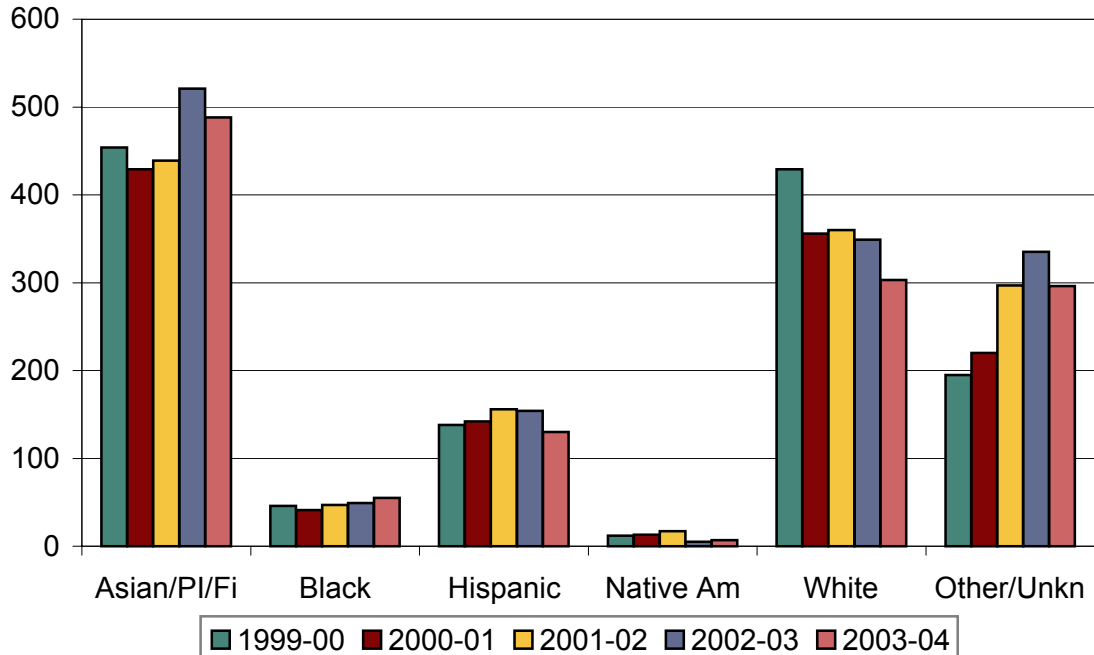
**De Anza College
Full-Year Transfers to UC by Ethnicity**



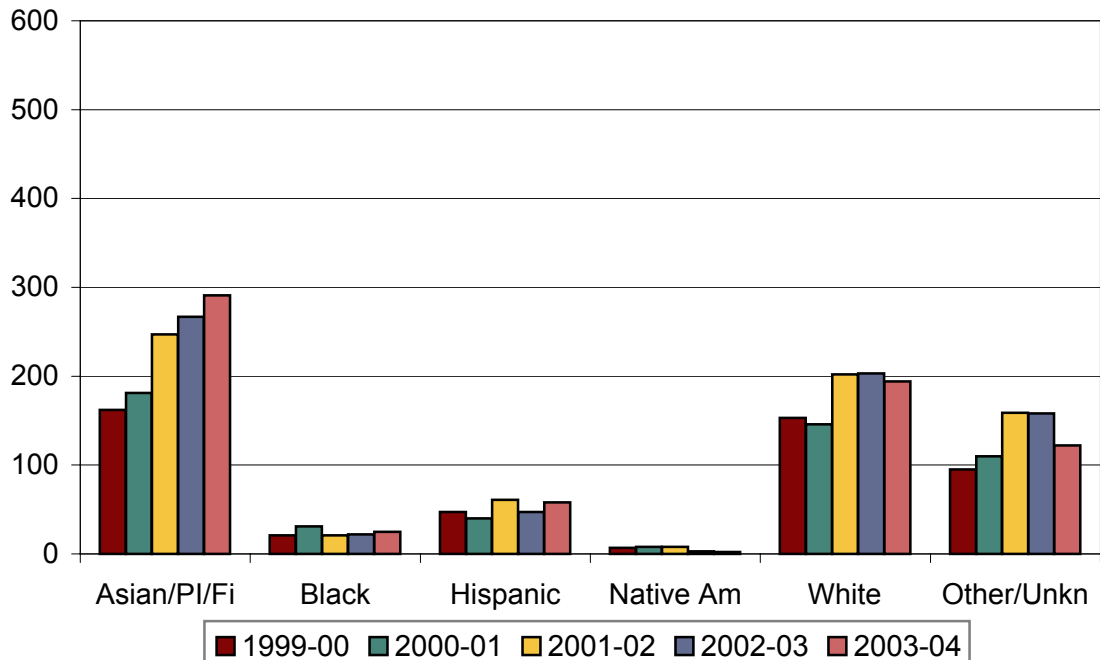
**De Anza College
Full-Year Transfers to CSU by Ethnicity**



**De Anza College
Associate Degrees Awarded by Ethnicity**



De Anza College Certificates Awarded by Ethnicity



Course Success Rates by Division 2004-05

September 23, 2005

Methodology

The computation of Pass (i.e. course “success”) uses the grades captured in the end of term enrollment file.

As noted below, the pass rate for each course does not include students who dropped the class before receiving a grade of W.

Definitions

The following definitions were used in the calculations.

Pass: includes grades of A,B,C or P

Did Not Pass: D,F,NP or I

Withdrew: W

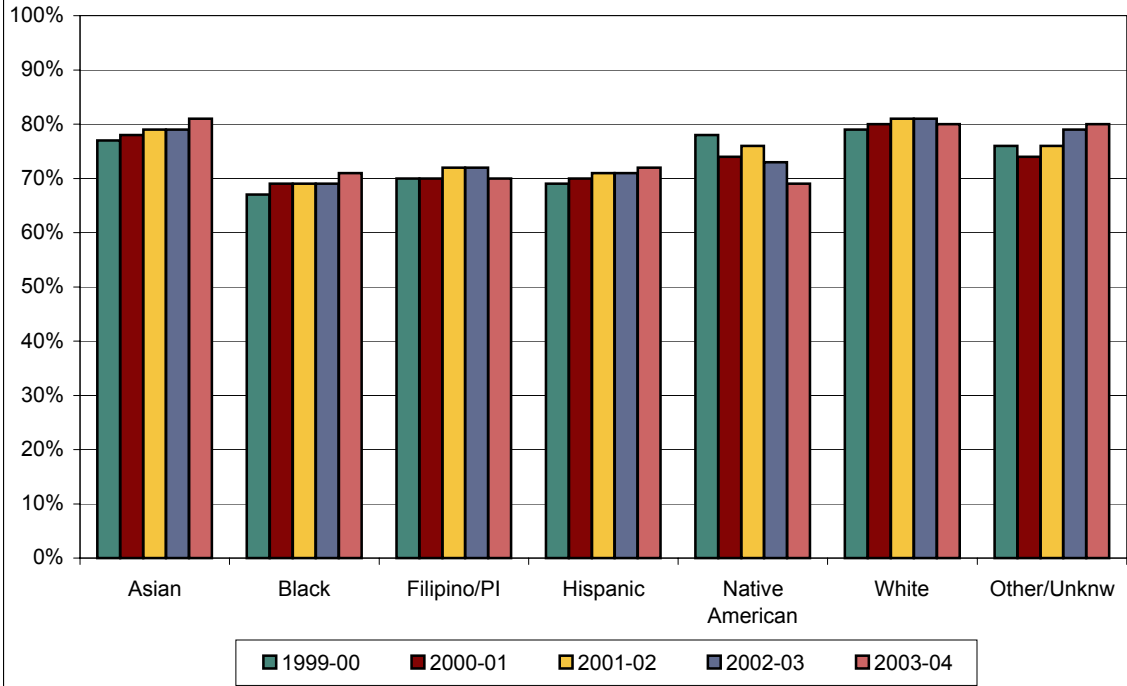
(Plus / Minus grades were included)

Row percents are based on the total grades for the class (including W's) at the end of the term. Students who drop the class before the 3rd week are not counted.

Cross-listed courses are reported in the division in which they are listed.

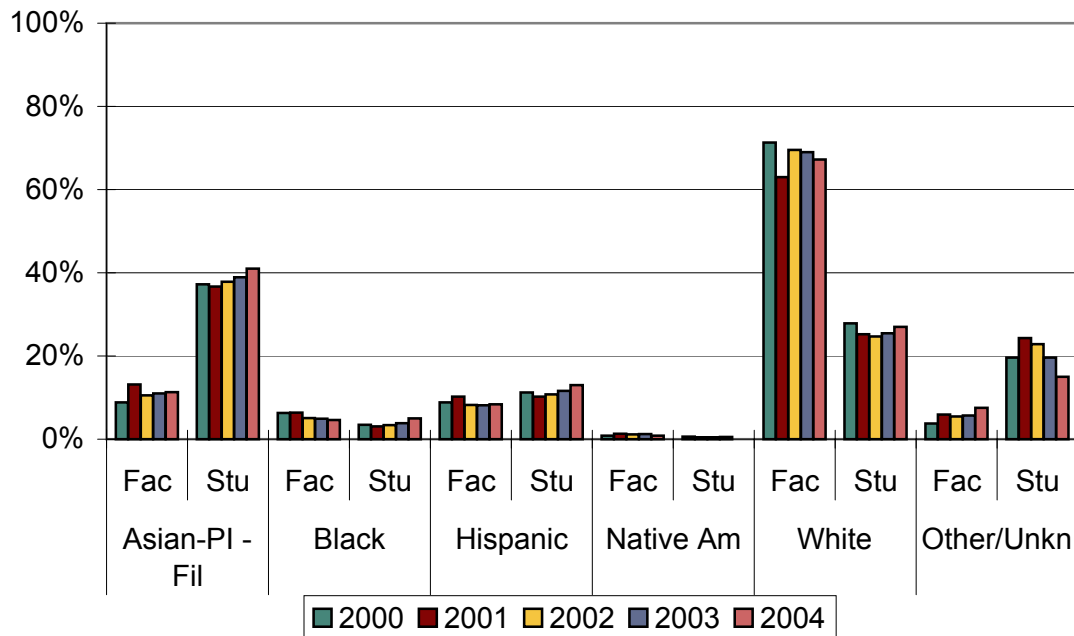
NOTE: This report does not include a test of statistical significance between groups. Caution should be used when drawing conclusions about cell figures less than 50 (approximate).

De Anza College Course Success Rates by Ethnicity



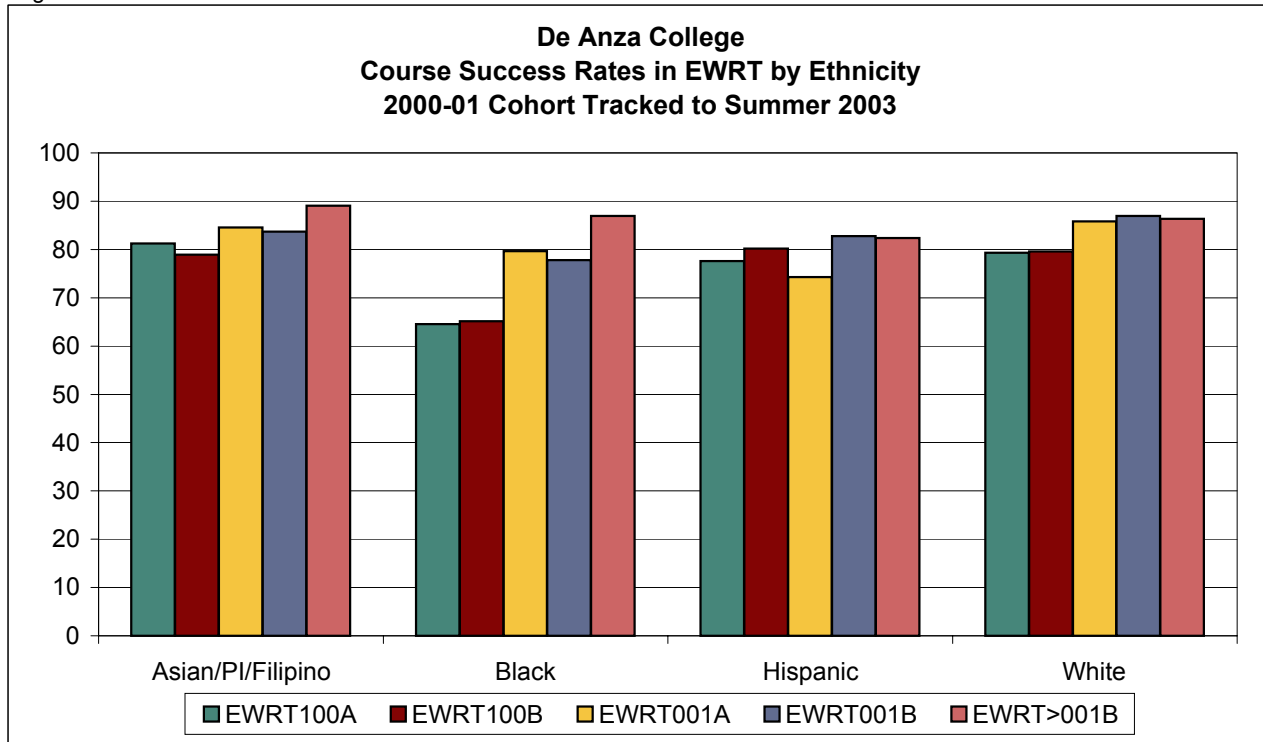
De Anza College

Fall Headcount-Student and Teaching Faculty by Ethnicity



		2005					
		Financial Aid		No Aid Awarded		Total HC	
		HC	Percent	HC	Percent	HC	Percent
Asian	Asian	61	23%	210	77%	271	100%
	Asian Indian	143	6%	2,275	94%	2,418	100%
	Cambodian	45	42%	62	58%	107	100%
	Chinese	631	12%	4,674	88%	5,305	100%
	Japanese	37	4%	794	96%	831	100%
	Korean	126	11%	1,061	89%	1,187	100%
	Laotian	13	28%	33	72%	46	100%
	Vietnamese	1,436	49%	1,524	51%	2,960	100%
	Other Asian	142	19%	593	81%	735	100%
Black	Black, Non-Hispanic	529	31%	1,181	69%	1,710	100%
Filipino	Filipino	365	18%	1,693	82%	2,058	100%
Hispanic	Central American	79	24%	257	76%	336	100%
	Hispanic	74	16%	401	84%	475	100%
	Mexican	719	23%	2,347	77%	3,066	100%
	Other Hispanic	101	24%	325	76%	426	100%
	Puerto Rican	15	34%	29	66%	44	100%
	South American	54	15%	310	85%	364	100%
Native American	Native American	57	31%	124	69%	181	100%
Other	Middle Eastern	61	24%	193	76%	254	100%
	Other Non-White	87	22%	305	78%	392	100%
Pacific Islander	Guamanian	6	17%	30	83%	36	100%
	Hawaiian	8	16%	41	84%	49	100%
	Other Pacific Islander	21	17%	105	83%	126	100%
	Pacific Islander	12	32%	26	68%	38	100%
	Samoan	5	21%	19	79%	24	100%
White	White, Non-Hispanic	1,383	14%	8,581	86%	9,964	100%
Decline to State	*Decline to state	720	11%	5,605	89%	6,325	100%

Figure 24



Percent Successful to Summer 2003					
Course	EWRT100A	EWRT100B	EWRT001A	EWRT001B	EWRT>001B
Asian/PI/Filipino	81.2	78.9	84.5	83.7	89.0
Black	64.5	65.2	79.6	77.8	87.0
Hispanic	77.6	80.2	74.3	82.8	82.4
White	79.3	79.6	85.8	86.9	86.4

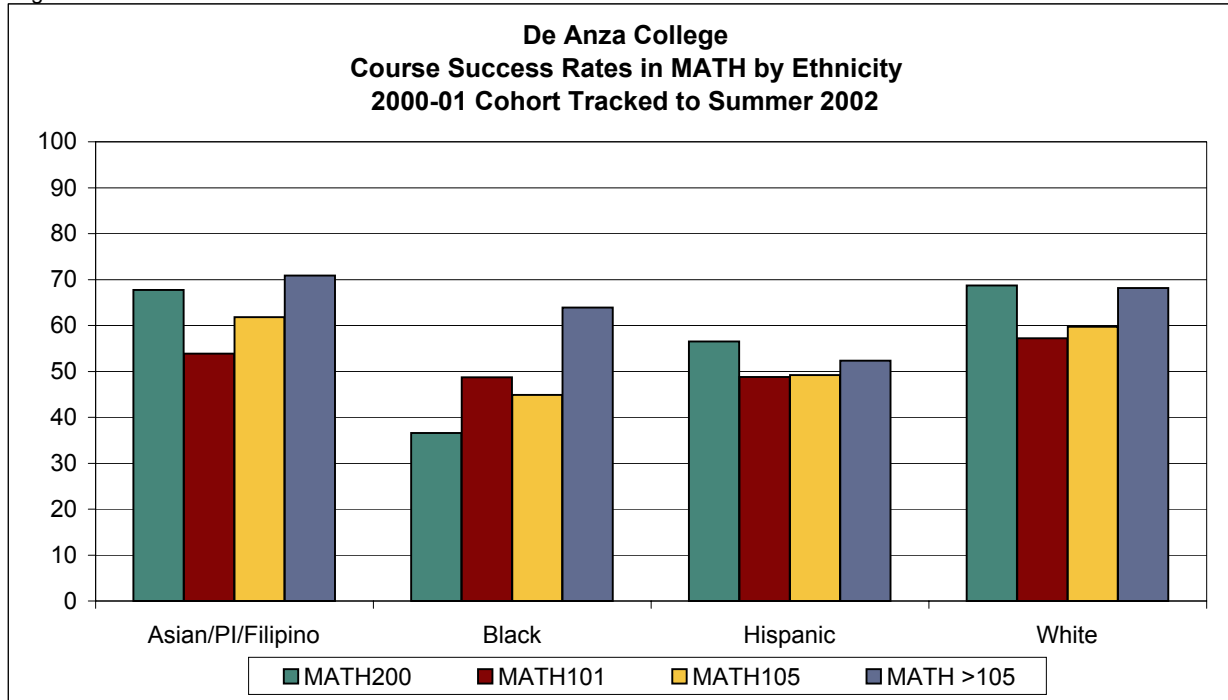
Total Number Successful to Summer 2003					
Course	EWRT100A	EWRT100B	EWRT001A	EWRT001B	EWRT>001B
Asian/PI/Filipino	160	677	984	499	544
Black	20	43	43	21	20
Hispanic	59	210	205	96	84
White	46	257	520	233	266
Native Am	1	7	8	2	16

Total Grades to Summer 2003					
Course	EWRT100A	EWRT100B	EWRT001A	EWRT001B	EWRT>001B
Asian/PI/Filipino	197	858	1,164	596	611
Black	31	66	54	27	23
Hispanic	76	262	276	116	102
White	58	323	606	268	308
Native Am	2	10	11	3	16

Note: Native American numbers are too small to provide meaningful success rates.

Source: Brio query of Tracking RDB for 1999-2000 cohort of new students. See Brio in Basic Skills folder of State of College on the IR&P server.

Figure 26

**Percent Successful to Summer 2002**

Course	MATH200	MATH101	MATH105	MATH >105
Asian/PI/Filipino	67.7	53.9	61.8	70.8
Black	36.6	48.7	44.9	63.9
Hispanic	56.5	48.8	49.2	52.4
White	68.7	57.2	59.8	68.2

Total Number Successful to Summer 2002.

Course	MATH200	MATH101	MATH105	MATH >105
Asian/PI/Filipino	128	242	499	3,507
Black	26	38	48	99
Hispanic	143	181	178	277
White	134	261	343	978
Native Am	5	10	6	11

Total Grades to Summer 2002.

Course	MATH200	MATH101	MATH105	MATH >105
Asian/PI/Filipino	189	449	807	4,950
Black	71	78	107	155
Hispanic	253	371	362	529
White	195	456	574	1,435
Native Am	9	17	14	18

Note: Native American numbers are too small to provide meaningful success rates.

Math>105 is college level and is defined as Math 1A-1D, 2A, 2B, 10, 11, 12, 22, 23, 44, 49A, 49B, 51.

Source: Brio query of Tracking RDB for 2000-01 cohort of new students. See Brio in Basic Skills folder of State of College on the IR&P server.



Improving Student Learning and Success: De Anza Basic Math

De Anza College Math Course Enrollments and Success Rates by Course Type and Ethnicity, Fall 2002

Ethnicity	Enrollment MATH 200-101-105		Enrollment All Other Math Courses		Success Rate MATH 200-101-105		Success Rate All Other Math Courses	
	#	%	#	%	#	%	#	%
Asian	481	20	1,435	47	300	62%	998	68%
Black	126	5	63	2	52	40%	36	55%
Filipino	197	8	110	4	106	54%	57	51%
Hispanic	479	20	201	7	247	51%	94	46%
Native American	14	1	6	0	7	50%	3	43%
Other	54	2	76	2	29	54%	45	58%
Pacific Islander	34	1	34	1	22	65%	23	66%
White	608	25	526	17	386	63%	368	68%
*Unrecorded	399	17	590	19	253	62%	433	70%
Total	2,392	100	3,041	100	1,402	58%	2,057	66%